

Ahu Ahu

BEACH VILLAS

Wedding Information

2024–2025



Your Wedding at Ahu Ahu Beach Villas

Thank you for considering Ahu Ahu Beach Villas for your special day.

Nestled under the mountain with magnificent sweeping ocean views, we are truly blessed to call this piece of paradise our home. You can exchange vows on the lawn or in front of Oraukawa Lodge where stunning panoramic ocean views will be the backdrop to your ceremony. Alternatively, if you already have a spot chosen to say your vows, we have great options for your reception either down in Oraukawa Lodge or up in a Marquee on the Lawn.

We also have luxury accommodation onsite for your family, close friends or bridal party, giving you a special opportunity to spend that extra time together.

Our venue is highly versatile and we welcome you to put your unique touch on it to create your ideal atmosphere for your wedding.

Nuala, David & Seth Marshall

| +64 (27) 365 7739

| holiday@ahu.co.nz



Oraukawa Lodge

"A huge thank you for providing us with the most beautiful location and setting for our wedding. We couldn't have found a more spectacular venue. We appreciated all your help and advice to make our day so special." — Matt and Beks

Oraukawa Lodge is a multi-function Palladian-style building ideal for your wedding. Designed to have as little visual impact as possible, Oraukawa Lodge is built into the hill and finished with a landscaped roof. Cedar bi-fold doors open all along the front onto a spacious courtyard, complete with fire-pit and breathtaking sea views.

Guest Capacity

Depending on your choice of catering style, we can accommodate the following numbers of guests:

Seated Dining – 80 guests max.

Inside Oraukawa Lodge we can seat up to 56 guests for a meal. If you're planning up to 80 seated guests you can create more space by erecting a marquee in front of the Lodge. See our Preferred Suppliers list for contact details.

Canape-style/Standing Dining – 100 guests max.

If your guests will be enjoying finger food-style catering, standing and chatting with glass in hand, Oraukawa Lodge can accommodate up to 100 guests.

Function Fee

\$40.00 per person i.e., 50 guests = \$2000.00 (children one year and over are included in your guest numbers). A non-refundable deposit of \$1000.00 is required to confirm your booking.



Marquee on the lawn

Celebrate your marriage with family and friends under the stars. This option provides more flexibility in terms of setup. With ample lawn space and a variety of marquee styles to choose from you can enjoy getting creative with the layout of your reception.

Guest Capacity

Ideal for larger wedding groups of 80–150, the marquee on the lawn option provides plenty of space for your guests to enjoy your special day.

Function Fee

\$40.00 per person (not including marquee hire) i.e., 50 guests = \$2000.00 (children one year and over are included in your guest numbers please). A non-refundable deposit of \$1000.00 is required to confirm your booking.

Marquee Hire

We suggest TLL Events, Dobson's Marquee & Party Hire or Lucy's Events. You will find their contact details on our Preferred Suppliers list.

The marquee can be erected from 2pm on the day of check-in and will need to be packed down the day after the wedding or the day you check out, before 12 midday. Please ensure your hire company is aware of these times as you may need to book an extra night.

A catering gazebo/marquee, extending from the back of the marquee, is required for your catering requirements. Please discuss with your caterer so ovens, BBQ, etc., are hired in. All your reception catering is to be done from here and not in Oraukawa Lodge.

You are welcome to hire caterers of your choice.

Power for the marquee is to be set up from our external power box for lighting, sound, catering and chiller trailers etc. Please ask your suppliers to liaise with us if they have any queries. We prefer this prior to your set up.



Accommodation

"Staying at the villas for three nights around our wedding allowed us to spend more quality time with our wedding party, friends and family. One of my bridesmaids said she felt like she was on a retreat – I loved that." — Alana

When you celebrate your wedding at Ahu Ahu Beach Villas all four Villas (1x Studio and 3x Family) and Oraukawa Lodge are to be booked for your event. The minimum stay is two nights, with a three-night minimum over long weekends (e.g., regional anniversary weekends, Easter, Queens Birthday, etc.) and a five-night minimum over Christmas and New Year.

Accommodation Rates

<i>Studio Villa</i> (Bride & Groom Suite) 1x Queen bed	\$325 per night (2 guests)
<i>Family Villa x3</i> 1x Queen bed 2x single beds in mezzanine bedroom	\$325 per night (2 guests) \$50 per night for each additional guest (maximum 4 guests total)
<i>Oraukawa Lodge</i> 2x Queen bedrooms	\$700 per night (4 guests)

Note: These costs are for 1st April 2024 – 31st March 2025 and they may vary from 1st April 2025.



What's included in 'Venue Hire'?

Booking Ahu Ahu Beach Villas gives you exclusive use of the Ahu Ahu Beach Villas and Oraukawa Lodge for your ceremony and/or reception.

If your reception is in Oraukawa Lodge this includes:

- leather couches and large oak dining table
- kitchen facilities i.e., full-sized fridge and freezer, gas oven and stove top, microwave, dishwasher/sterilizer
- audio-visual equipment i.e., data projector and large screen, DVD player, video player, stereo (suitable for background music only), apple iPod connector and free WIFI
- outdoor fire & firewood

Note: All furniture inside is to stay inside please (not used in the courtyard or on the lawn).

If your reception is in a Marquee on the lawn this includes:

- access to power for your lighting, sound and catering requirements
- set up of kitchen bench in catering gazebo/marquee and access to running water
- fire pit & firewood

Parking: Ample parking is available. If you are planning to arrange transport for your guest's we suggest minibuses or 20-seater coaches (contact Withers Coachlines – see Preferred Suppliers list). Not all buses are able to access the driveway so please discuss with us before making any arrangements.



Other Things to Think About...

Catering

Our preferred caterers are:

Fork N Knife (Jeremy)

0277030520

forkknife.newplymouth@gmail.com

www.forkknife.net

instagram: @fork_n_knife_ & @smokemeateverydaynp

Theory Food (Momo)

+64 (0)22 395 6420

hello@theoryfood.co.nz

instagram: @theory.food

See our Preferred Suppliers list for full Caterer contact details. Please let us know once you've confirmed a caterer so we can talk directly with them about equipment and set up.

Bar & Service Staff

We can arrange staff at an additional cost or you can organise staffing with your caterer.

Setup

Oraukawa Lodge can fit a maximum of seven round tables of eight people (56 people in total). Our oak dining table makes a great head table for the bridal party. In addition, in the courtyard two 5m x 5m marquees or one 5m x 10m marquee will fit a maximum of three tables of eight people (24 people in total). These will bring the maximum number of seated guests to 80 (including children).

For canape-style catering (i.e., standing with finger food, not seated dining) you may wish to hire tall drinks tables to place out in the courtyard.

Tables, chairs, tablecloths, napkins and decorations can be hired through Dobson's Marquee & Party Hire, TLL Events, Lucy's Events or your caterer.

Mobile Chiller

A small mobile chiller may be required depending on guest numbers, please discuss with us or your caterer.

Cutlery, Crockery & Glassware

We have a limited number of the following available for hire at 50 cents per item:

Dinner knives and forks, entrée knives and forks, dessert spoons and forks, soup spoons, dinner plates, side plates, dessert/soup plates, cups and saucers, water glasses, champagne flutes and wine glasses.

Portable Toilets

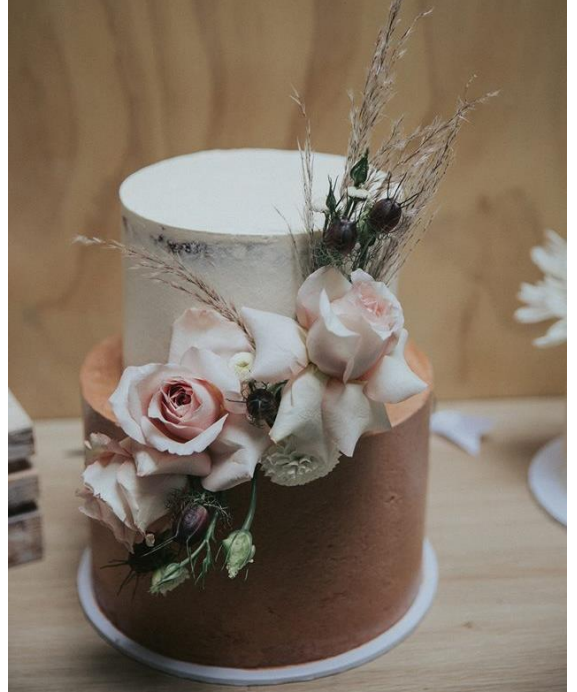
Portable toilets are required for Marquee on the Lawn with 80-150 people. We recommend Kiwi Hire Deluxe Double Loo Trailer. (see Preferred Supplier list for contact details).

Sound & Lighting

We recommend Neil Penno from Taranaki Sound Hire or Mike Keats from Theatre, Lamp & Lighting (see Preferred Supplier list for contact details)

Rubbish and recycling: We can arrange general recycling, general waste & glass bins (green, brown or clear glass) at an additional cost. Alternatively, you can choose to dispose of your own waste.





Terms & Conditions

We look forward to being a part of creating your very special wedding day. To ensure this we ask you to kindly respect our venue and ensure that the following guidelines are adhered to. Please read these carefully and if you have any questions feel free to contact us.

Accommodation

Guests not staying at Ahu Ahu Beach Villas, including Oraukawa Lodge, are to have left the venue by 1200MN (2400hrs). Please discuss with us if you are planning a gathering the day after your wedding. All the Villas and the Lodge are to be booked for your event for a minimum of two nights. A three-night booking is required for long weekends. All indoor furniture is to remain inside the Villas/Lodge – please do not take it outside. Inside Ahu Ahu Beach Villas and Oraukawa Lodge we operate a strict no smoking policy.

Check-in/Check-out

Check-in time is from 2pm. Check-out is 10.30am from the Villas and 12MD (1200hrs) from Oraukawa Lodge. If you are planning a gathering the morning following your wedding do let us know.

Cancellation Policy

All cancellations must be notified to holiday@ahu.co.nz in writing. The following terms apply:

- Initial deposit is non-refundable
- In the event that we are unable to fill a cancelled booking, the following charges apply:
 - If cancelled within 30 days of arrival, 50% of the total cost of the booking will be charged.
 - If cancelled within 7 days of arrival, 100% of the total cost of the booking will be charged.

Wedding Ceremony & Reception

Final confirmation of wedding ceremony and reception details are required 30 days prior to the wedding day. This includes final attendance numbers (including children one year and over), ceremony and reception start times, setup details, and staffing requirements.

Deposit & Payment Requirements

A non-refundable deposit of \$1000 is required to secure your reservation. Payment for accommodation, venue hire and additional costs are payable by 12 midday the day of your arrival.

Damage, Loss or Breakages

The cost of items broken, damaged or lost will be charged to the person booking the venue.

Cleaning & Rubbish Removal

Any additional cleaning requirements in excess of general cleaning may incur a fee, which will be charged to the person booking the venue.

Music

All music to finish by 11.30pm at the latest. Please ensure your band, DJ or person in charge of your playlist is aware of our finishing time. We prefer not to be put in the position of having to approach you or them to turn the music off. Fees may apply if there is a late call-out due to a noise complaint.

Guest Departure

All guests not staying onsite will need to have vacated the property by 12am.

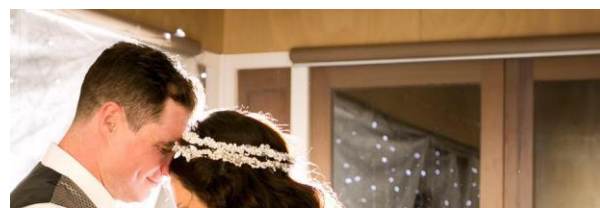
Public Holidays

If departure date falls on a public holiday there will be an additional public holiday surcharge for housekeeping.

Transport

If you plan to have your guests arrive & depart by bus, we prefer 20-seater buses please. Our entrance enables 20-seater buses to access our venue.

NB: All costs are valid from 1st April 2024 – 31st March 2025



Our Preferred Suppliers

Catering

Fork N Knife (Jeremy)

0277030520

forkknife.newplymouth@gmail.com

www.forkknife.net

instagram: @fork_n_knife_ &

@smokemeateverydaynp

Theory Food (Momo)

+64 (0)22 395 6420

hello@theoryfood.co.nz

instagram: @theory.food

Equipment, Toilets & Sound

Lucy's Events

07 571 0963

<https://lucysevents.com/>

Dobson's Marquee & Party Hire

+64 (0)6 755 0068

www.dobsons.co.nz

Taranaki Kiwi Hire Group

0800 247 HIRE

027 247 HIRE

<https://www.kiwihiregroup.co.nz/>

Taranaki Sound Hire (Neil Penno)

+64 (0)6 753 4792

TLL Events (Mike Keats) – Marquee & Party Hire

+64 (0)6 758 2875

michael@tll.events

www.tll.events

Wedding Planners

Weddings by Emily

+6421 104 9950 | weddingsbyemily.co.nz

withoutahitchweddingsnz@gmail.com

Photographers

Katie O'Neill

027 5557667 | katie@katieoneillfoto.com

instagram: @itskatieoneill

www.katieoneillfoto.com

Transport

Withers Coachlines

+64 (0)6 751 1777

www.witherscoachlines.co.nz

Ahu Ahu

BEACH VILLAS

Nuala, David & Seth Marshall

mobile: + 64 (0)27 365 7739

email: holiday@ahu.co.nz

website: ahu.co.nz

facebook: facebook.com/AhuAhuBeachVillas/

instagram: [@ahu_ahu_beach_villas](https://instagram.com/ahu_ahu_beach_villas)

